

New generation of CS.3 compact screws

CSH.3 - Dimensions & Connections

BITZER Kühlmaschinenbau GmbH

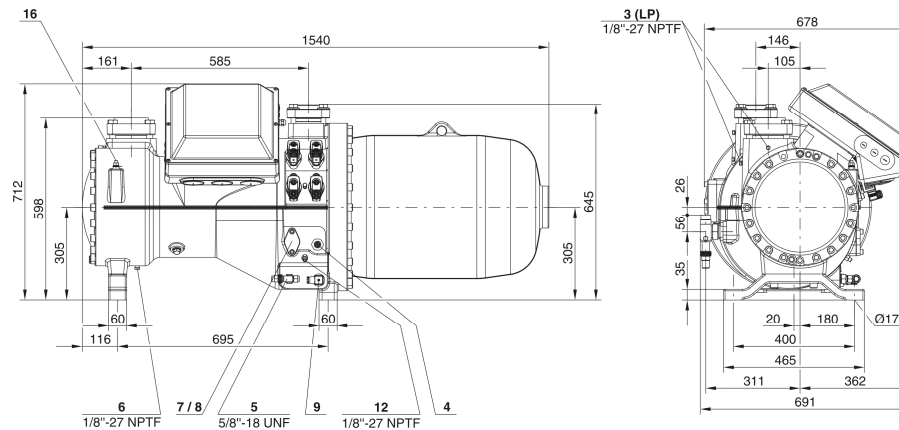


New generation of CS.3 compact screws

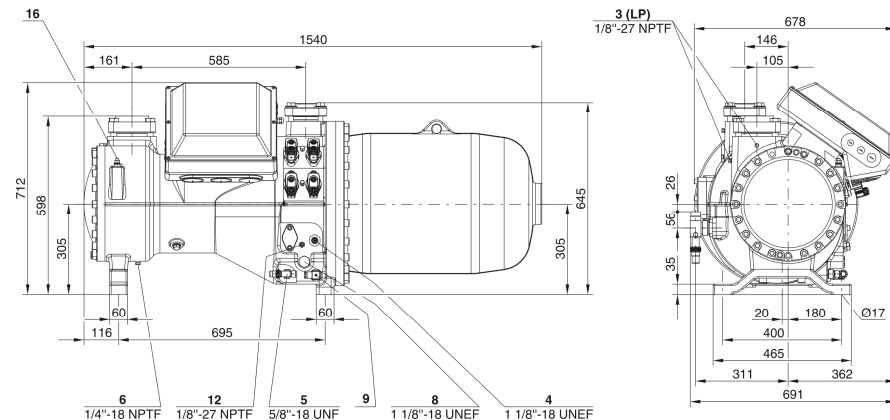
/ Common features CSH.3 and CSH.1

- Compressor dimensions and connections
 - ⇒ Overall dimensions are identical
 - Same footprint
 - Same location and dimension of suction and discharge port

CSH3



CSH1



New generation of CS.3 compact screws

/ Unchanged features CSH.3 and CSH.1

- Compressor dimensions and connections
 - ⇒ Economiser port (position and connection size)
 - ⇒ Terminal box and electrical connections
 - ⇒ Oil type and oil charge
 - ⇒ Oil heater
 - ⇒ Oil temperature sensor
 - ⇒ HP/ LP service connections
 - ⇒ Oil service valve



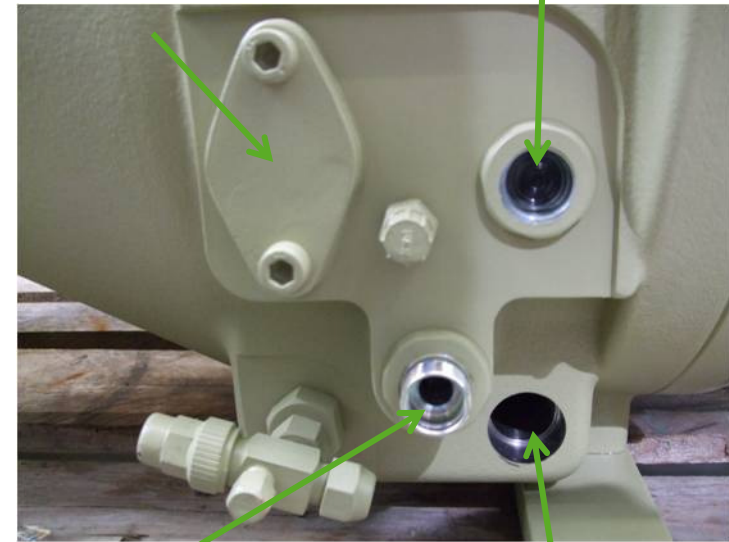
New generation of CS.3 compact screws

/ Options:

- Opto electronic minimum oil level control
- Opto electronic maximum oil level control
 - ⇒ for improved oil return control from a possible secondary oil separator (flooded systems)
- Connection for mechanical oil level control
 - ⇒ For replacement of existing CSH.1 compressors

Connection for
mechanical oil level

Sight glass position
or max. oil level



Min. oil level

Conn. for oil heater

Opto electronic sensor



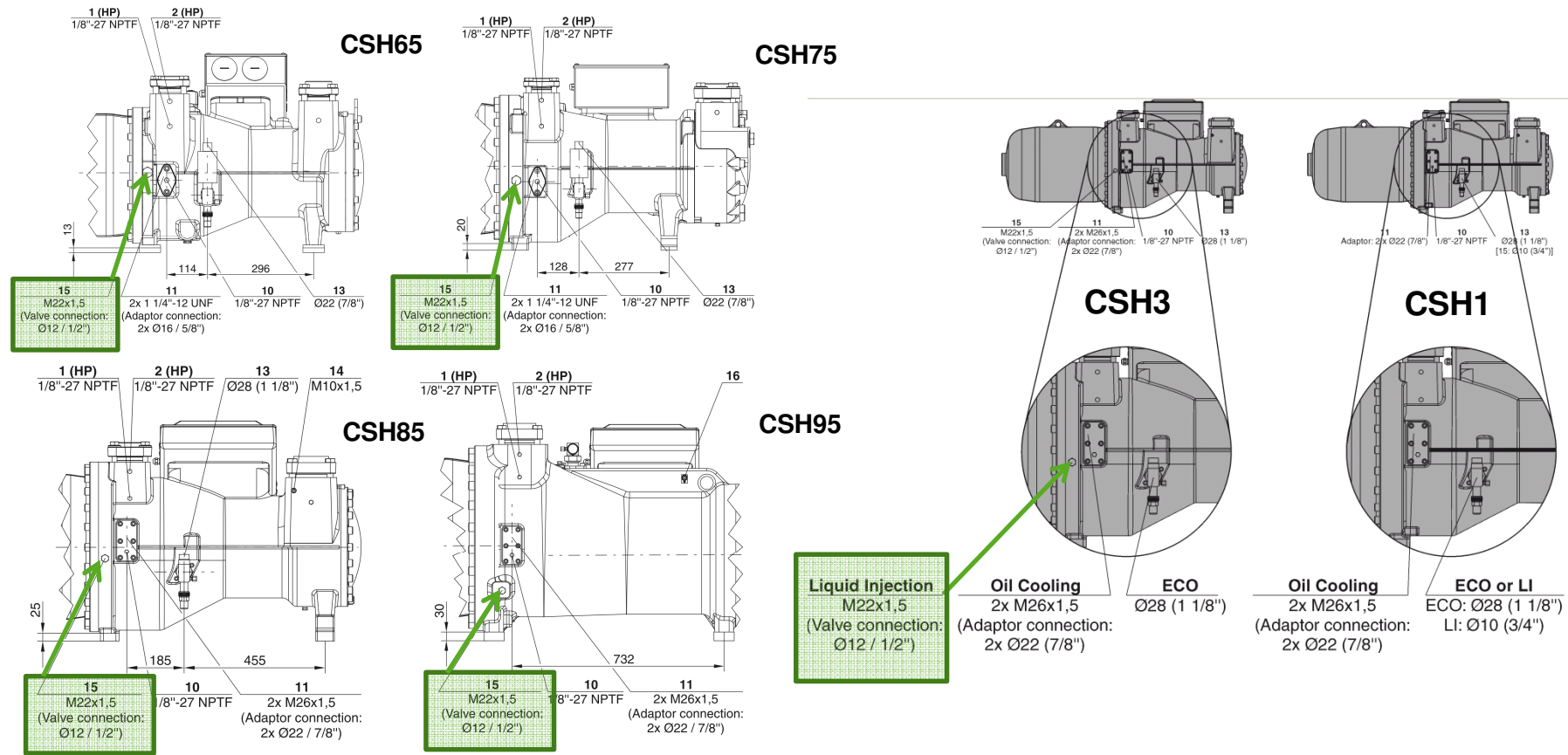
Example CSH8573



New generation of CS.3 compact screws

/ New Liquid Injection Port (LI)

- Additional injection port for liquid injection (independent from economiser port)



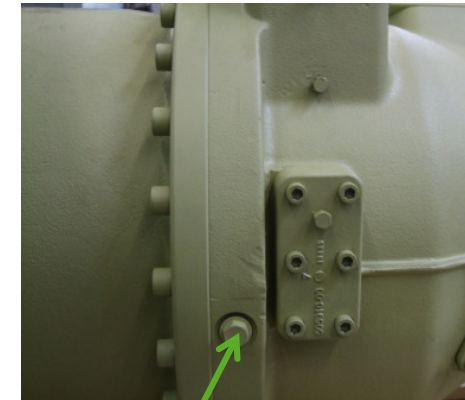
New generation of CS.3 compact screws

/ New Liquid Injection Port (LI)

- Optimized and integrated injection nozzle
- External solenoid valve and discharge temp. control:
 - ⇒ 110 °C solenoid valve energized
 - ⇒ 100 °C solenoid de-energized
- Shut-off valve for LI (option)

	Part number	Connection diameter
CSH65	361332-10	Ø 12mm
CSH75	361332-10	Ø 12mm
CSH85	361332-10	Ø 12mm
CSH95	361332-10	Ø 12mm

Additional info 37820349 for LI adapter upon request!!



Port for LI



Shut-off valve for LI



New generation of CS.3 compact screws

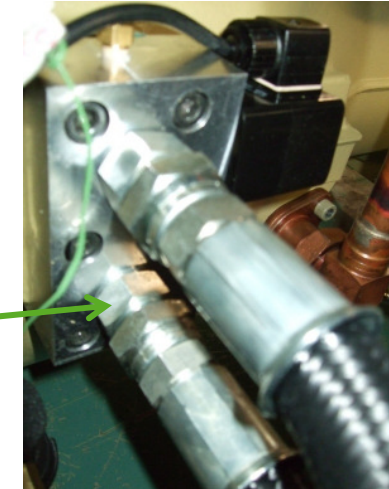
/ New external oil cooling connection and control

- Same location as previous series
- Same pipe sizes as CSH.1

/ New control logic

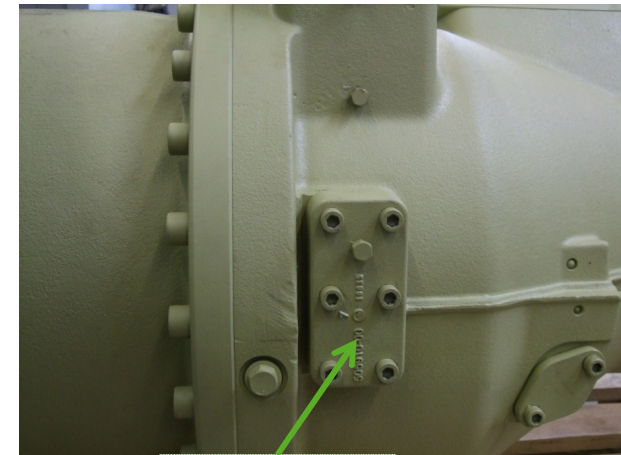
- Normal oil flow with de-energized coil (standard)
 - Additional oil flow with energized coil (for external oil cooling)
- ⇒ Adapter for external oil cooling (option)

Connection
for external oil
cooling



	Part number	Connection diameter
CSH65	367912-01	2x Ø 16mm
CSH75	367912-01	2x Ø 16mm
CSH85	367912-02	2x Ø 22mm
CSH95	367912-02	2x Ø 22mm

Additional info 37820350 for oil cooling adapter upon request!!



Standard





THE HEART OF FRESHNESS